

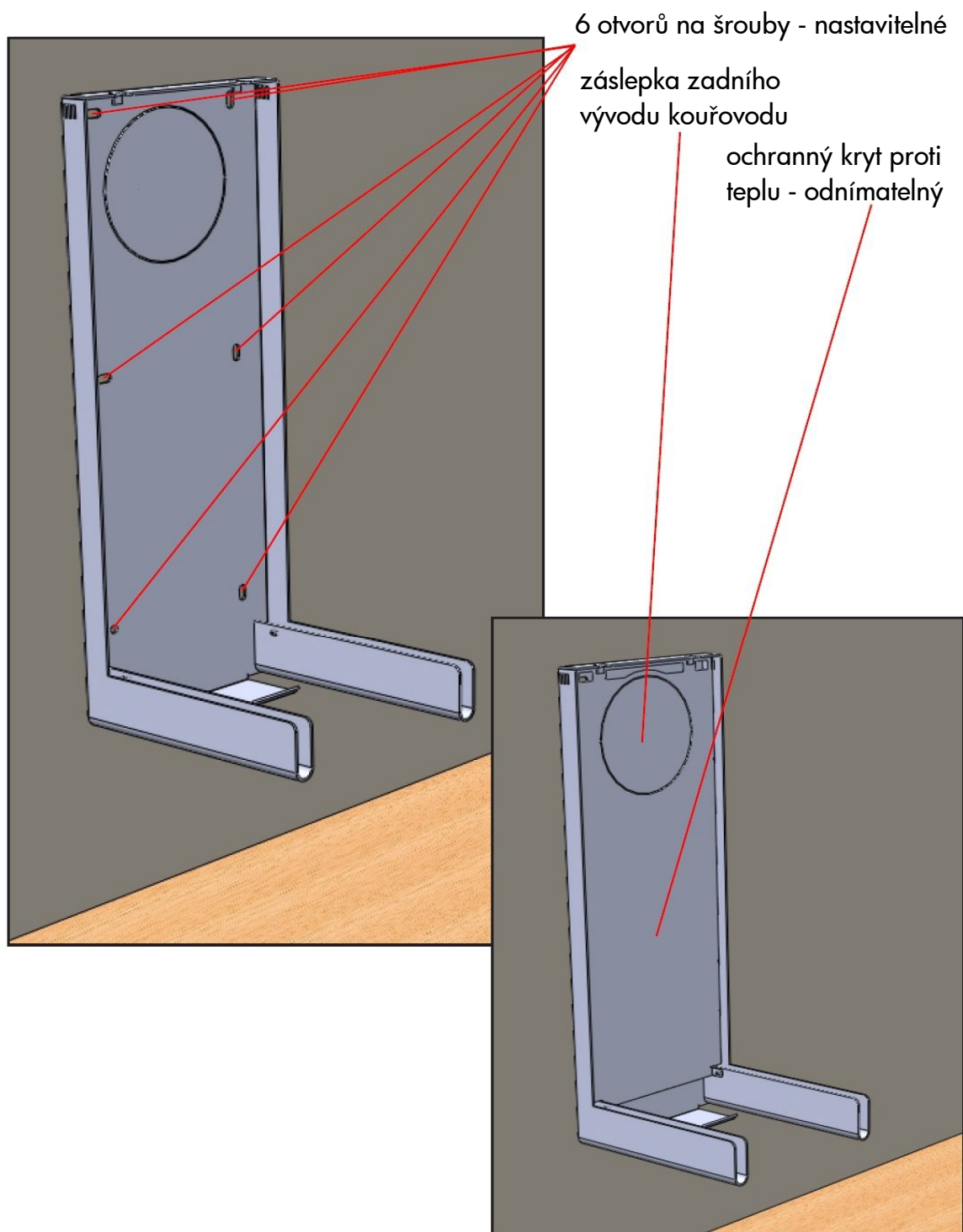
Aduro 9-4

MONTÁŽNÍ NÁVOD

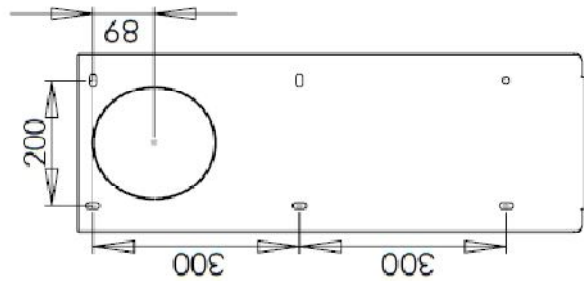
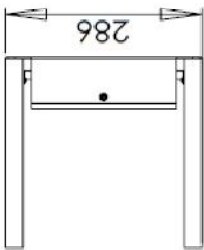
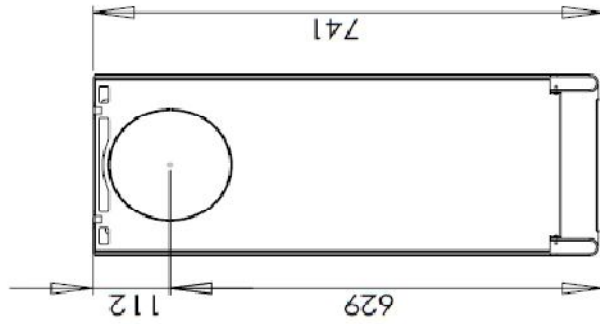
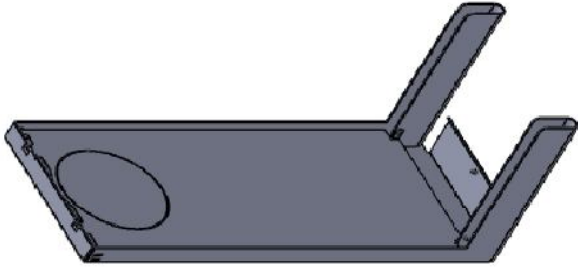


www.kamna-aduro.cz

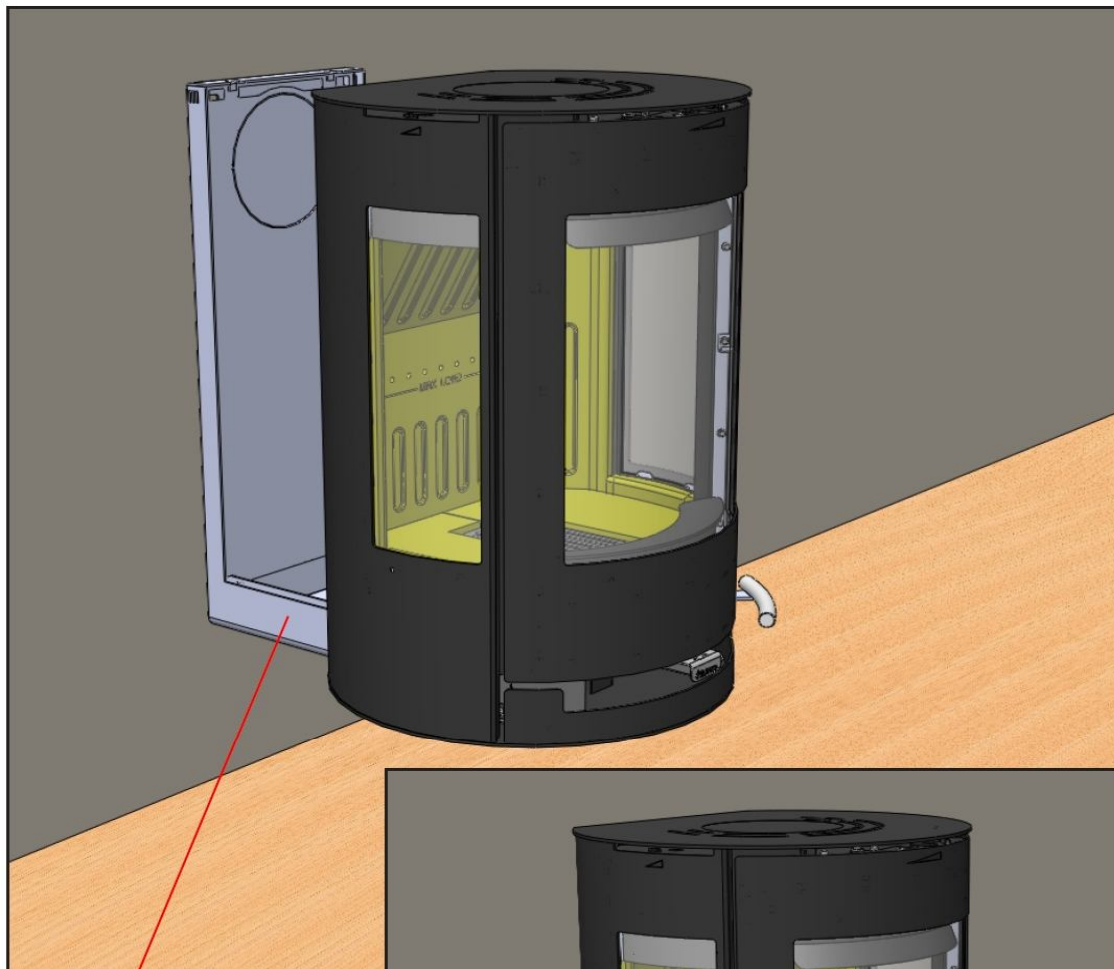
KONZOLA



NÁKRÉS KONZOLY

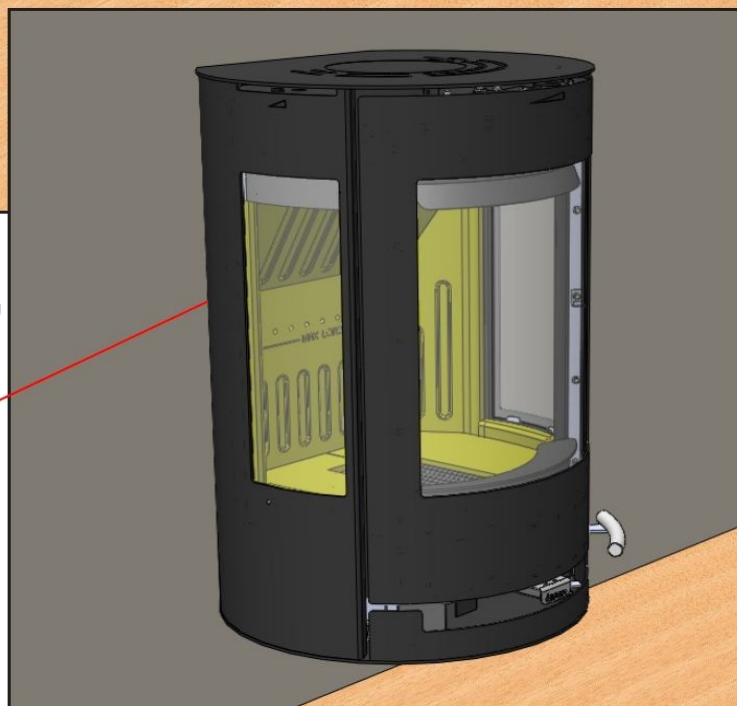


UMÍSTĚNÍ KAMEN



jestliže je použito zadní
napojení na kouřovod, mohou
být kamna během instalace
cca. 200 mm od zdi

kamna jsou posunuta
po kolejničkách až
ke zdi



ZAJIŠTĚNÍ KAMEN

kamna jsou zajištěna
šrouby v horní a
spodní části

